

Hi, Neighbor!

A Newsletter for the Eastmorland and Lake Edge Neighborhoods

Summer 2024

Upcoming Events

ECA Fundraiser at Olbrich Biergarten

Wednesday, July 3

Rain date: July 10

3527 Atwood Ave.

A portion of proceeds will benefit the Greener Eastmorland Community Association Fund.

Annual LENA Picnic

Sunday, August 11

Lake Edge Park

Meet your neighbors, eat great food, and listen to live music! Bring a dish to share, a beverage, and a lawn chair.

Tunes on the Triangle

Sunday, August 25, 3 p.m.-7 p.m.

3565 Tulane Ave.

Free, fun event featuring music performances, food carts, and activities for families. Hosted by the Schenk PTO and Eastmorland Community Center.

Eastmorland Outdoor Market

Saturday, September 14, 10 a.m.-1 p.m.

Lansing Food Forest, 299 Starkweather Dr.

Rain location: Eastmorland Community Center,
3565 Tulane Ave.

Fall Fest

Saturday, October 19, 3 p.m.-9 p.m.

Ontario Park, 720 Ontario St.

Music and family fun; tip your musicians!

Eastmorland Neighborhood Leaf Raking

Saturday, November 9, 9 a.m.

Rain date: Sunday, November 10, 1 p.m.

Meet at Olbrich Shelter. Help your neighbors rake leaves from their lawns. Enjoy pizza with other volunteers afterward. To join, email kwhitman@uwalumni.com.

Eastmorland Winter Market and Santa Visit

Saturday, November 30, 9 a.m.-1 p.m.

Eastmorland Community Center, 3565 Tulane Ave.

Neighborhood Cookie Exchange

Saturday, December 7

Email marlaj222@gmail.com to participate!

Meet an Award-Winning Neighborhood Artist!

By Linda Linssen

A native Californian, David Williams moved to Madison in 1990 and to Eastmorland in 2016. He has painted all his life, switching from acrylics to watercolors 15 years ago and leaving his job five years later. "I refuse to call that retirement, since painting is now my way of life," he said.

David works in his studio but also participates in plein air competitions in Wisconsin and beyond. "A plein air event means you are painting 'live,' outside and directly in front of the scene," he explained. "Painting from photos is not allowed."

Each competition has variations. In David's words, "timed events called 'quick paint' or 'paint outs' are restricted to a specific location, where you may have as little as two hours to complete and frame a painting." The

(Continued on page 3)

Summer Events @ St Luke's



St Luke's Episcopal Church is reprising several great neighborhood events from 2023. There are also some new additions. All events are free and open to anyone.

- Ever wanted to try your hand at painting? Come to one of the Saturday seminars in June.
- Want to make music and have fun? Try out the full weekend of ukulele love in July.
- Love beer? Come learn how easy it is to brew it yourself in August.
- Want to impress your friends on taco night with homemade salsa and learn how to can food? We have

(Continued on page 3)

Hi, Neighbor!

Summer 2024

Hi, Neighbor! is an ECA & LENA collaboration

Hi, Neighbor! is a community newsletter serving residents of the Eastmorland and Lake Edge neighborhoods, published on behalf of the Eastmorland Community Association (ECA) and the Lake Edge Neighborhood Association (LENA).

Want to submit an article?

Send articles for publication to hineighboreastmorland@gmail.com as a Word document or Google Doc for editing by the newsletter crew.

Photos are welcome and will be included as space allows. Please keep in mind they will be printed in black and white, but published in color online.

Advertise in Hi, Neighbor!

For information about advertising, contact Dan at 608-241-1158 or zimmerman_dan@hotmail.com.

Triannual Publication Schedule:

March 2024
June 2024
October 2024

Past issues are available online and in color at eastmorland.org and lenamadison.org.

NEWSLETTER VOLUNTEERS

This newsletter is possible thanks to the help of many volunteers! No experience is needed, and there are many ways to get involved. To receive updates or get involved, please email hineighboreastmorland@gmail.com.

EDITORS:

Meghan Chua, Micah Kloppenburg,
and Matthew Ledger

ADVERTISING:

Dan Zimmerman

CONTRIBUTORS AND VOLUNTEERS:

Lauren Cohen/MadiSUN Solar, Don Fleischman, Matt Ledger, Linda Linssen, Staci Marresse-Wheeler, Jennifer Peterson, Kathryn Prince, Melissa Agard, Samba Baldeh, Dina Nina Martinez-Rutherford, Madison Gas & Electric

Hi, Neighbor! is looking for an additional volunteer to help with the layout of the October 2024 newsletter. No experience is needed—we will help you learn!

Email hineighboreastmorland@gmail.com if you are interested.



You love your furry friend, and so do we! Introduce your pet in the next *Pet Vignette*. Share a little about your pet with us via email at hineighboreastmorland@gmail.com.

GOOD MUSIC ROOTS MUSIC AMERICANA MUSIC

LISTEN ONLINE
WVMO.FM

TURN YOUR RADIO ON
98.7 FM

WVMO

THE VOICE OF MONONA

SUPPORT LOCAL RADIO & ADOPT A WATT TODAY

Meet an Award-Winning Neighborhood Artist!

(Continued from page 1)

other variation allows for a larger range of territory, and artists must produce three to six paintings within the allotted time.

“Some artists will return to a specific location for days to complete a painting, since sunlight and shadows are different during each part of the day,” he said. “I typically

do most paintings in a couple of hours but sometimes return because of conditions or to get the final steps right.” Site conditions can be challenging for plein air artists. “Light is always changing, and shadows move or disappear,” David said, “but rain and wind are the primary enemies, especially for watercolorists.” He also mentioned humidity and heat (which affect paint drying rates) ... and bugs!



**PROUD TO LIVE IN
AND SUPPORT
MADISON**

Call for a bundle quote today!



Heather Francisco
Office Manager
Josh Erickson Agency LLC
hfrancis@amfam.com
(608) 241-8444
5530 Eastpark Blvd
Madison, WI 53718

HOME | AUTO | LIFE | BUSINESS | FARM & RANCH

American Family Mutual Insurance Company S.I. & its Operating Companies, Life Insurance underwritten by American Family Life Insurance Company, 6000 American Parkway, Madison, WI 53783 ©2022 21178 – 8/22 – 21060027

Among the awards David has won are Sponsors Choice (Augusta, MO, 2024), 2nd place - GO Paint! (Chippewa Valley, 2023), and Barnyard Dream (Wisconsin State Fair, 2021). His work can be seen at williamswatercolors.com, where you can also join his email list, follow his blog posts, and discover current and upcoming events. If you add a plein air event to your 2024 calendar, David advises going during a quick paint or a final sale. He encourages everyone to check out one of these unique competitions, where you can, as he said, “interact with the artists and perhaps take home a treasured painting or two.”

Summer Events @ St Luke's

(Continued from page 1)

the perfect way for you to spend a Saturday afternoon in September.

- Like to eat tacos, drink beer, and generally have a good time? Come eat the salsa and drink the beer made at the summer events at a taco celebration.

Why such a variety of events? Because these are things we love, and we want to share that love with you.

All materials for every event are provided, and every event is 100% free. Continue to check the St Luke's website, stlukesmadison.org, for updated information and registration information.

Schedule of Events

- June 8 - Abstract Painting
- June 15 - Painting From a Photo
- July 27 - Beginning Ukulele Lessons (Ukulele Provided)
- July 28 - Beginning Ukulele Lessons (Ukulele Provided)
- July 28 @ 4 p.m. - Ice Cream Social and Ukulele Jamboree
- August 4 - Beer Brewing Basics
- September 7 - Salsa Making and the Basics of Canning
- September 8 @ 4 p.m. - Taco Celebration



Welcome...
DR. CHRISTOPHER BIRD, DC

lifecity
CHIROPRACTIC

NEW DOCTOR DEAL

\$49* NEW PATIENT SERVICES \$178 value

INCLUDES EXAMINATION, REPORT OF FINDINGS & FIRST DAY'S TREATMENT WITH DR. CHRISTOPHER BIRD, DC

*Excludes some insurances: including but not limited to Medicare & Medicaid

509 Cottage Grove Road
Madison, WI 53716

info@lifecitychiro.com

608.442.9909

My Neighbor's Garden: Dee Long

By Jennifer Peterson

Dee Long turned 83 on May Day and still maintains beautiful perennial borders around the Eastmorland duplex her family has owned since 1955. One of her borders comes right up to the sidewalk, a colorful treat for passersby - especially in July when her beloved lilies are in bloom.

Dee is passionate about growing flowers, especially perennials. "I love flowers. Sometimes I see one in bloom and think, 'Oh my god, look at that!'" Scent matters, too - lavender is one plant Dee can't live without.

She has early memories of helping her father with his victory garden at their home in Monona. "Family of five, lots of kids to feed - that's where our vegetables came from." As a child, Dee helped pick tomatoes. "I love tomatoes. Especially on a hot day, when they're warm. We'd take the salt shaker out to the garden and pick tomatoes and salt them and eat them right there."

Dee got into flower gardening for her mom, who was living in the duplex. "She wanted flowers, but she couldn't keep up the yard anymore." So Dee, who lived nearby with her husband Jeff and their kids, started planting perennials around the home - daylilies, daffodils, a peony. Some of those plants still grow in her garden.

Dee moved into the duplex herself in the late '60s and kept gardening. "I went into it knowing nothing," she says. "I just kept trying. After two tries, I would go on to something else. If it came back the next year, whoopee! I



Dee's beloved grandson, Zach, in her garden in the '90s.

did something right!"

She prefers perennials to annuals. "If you stick with perennials, they take up a good space, so you don't have blank spots you have to fill with petunias or marigolds." We both smile when we talk about the joy of seeing a favorite perennial emerge in the spring. "Hi, friend!" I say to my imaginary plant. Dee chimes in, "Did you have a good winter?"

Dee says she's not artistic, but her garden says otherwise - her planting combinations are graceful and interest-

(Continued on page 11)

Find Energy Savings Here.



Partner with MGE to save energy.

Make mge.com your first stop.

- Get easy, low-cost ways to save energy.
- Use calculators to estimate your savings.
- Learn about incentives from Focus on Energy.

Join us in creating a more sustainable future.
Visit mge2050.com.



Your community energy company

Go Solar With the MadiSUN Solar Program

MadiSUN is the City of Madison program that makes going solar easy. Since 2016, the MadiSUN Group Buy Program has helped homeowners across the area install solar-electric systems on their rooftops. 323 households have gone solar thanks to the program's simplicity, reduced price, financing options, and customer service.

MadiSUN also offers solar incentives for businesses, nonprofits, and affordable housing providers. Check out madisunsolar.com to learn more about how to go solar!

How Does It Work?

Education: Through free community information sessions, we teach residents about how solar works, what return on investment to expect, and what financing options are available.

Financing Solutions: Participants can receive a Federal Tax Credit equal to 30% of the cost of their system and a \$500 rebate from Focus on Energy. Our MadiSUN team can also introduce you to other financing options that might be available to you.

Selected Solar Installer: MadiSUN takes the guesswork out of selecting a solar contractor. Our staff has examined past work and customer reviews to select experienced, reputable, local solar contractors. We will refer participants to our selected installers for specific, in-depth home solar proposals.

Why Go Solar?

- Save money on your energy bills.
- Increase the value of your home.
- Hedge against rising utility prices.

- Switch to clean, renewable energy.

FAQ

How does solar power work?

Solar panels capture the sun's energy and channel it through wires to an inverter, where it's converted to electricity to power your home. When your solar electric system produces more power than you need, it feeds the power back into the electricity grid.

What kind of home is a good fit for solar?

Rooftops unshaded by trees or other objects are ideal for solar. Homes with roofs that face south are best, but east- and west-facing rooftops can generate adequate electricity if unshaded. Electricity usage and habits play a big role too. Getting a free site assessment will help you learn more about your home's solar potential.

Is solar a good investment?

Installing a solar system means you buy less energy from your utility, generating cost savings over the life of your solar project. Many residential solar systems become "cash-flow positive" in 10 years and produce energy for 20 years or more.

What happens when the sun isn't shining?

Most solar systems are grid-tied, which means a local utility company delivers the power you need beyond what your solar panels produce. Your utility will continue to maintain a reliable grid.

Now is the time! Check out madisunsolar.com to learn more.



Bikes Fixed Right



Visit

revolutioncycles.net

We sell and repair bikes

*We repair bikes of all types
including ebikes*

Stop by

2330 Atwood Ave, Madison WI

In store or curbside service available

or call

(608)-244-0009

**MAD CITY
MUSIC**

NEW + USED || ALWAYS BUYING VINYL + CDS

MADCITYMUSIC.NET || 608-251-8558

2023 ATWOOD AVE. MADISON, WI 53704

No-Cost Tips for Saving Energy

From Madison Gas and Electric (MGE)

Using energy efficiently is an easy way to reduce your environmental footprint and save energy. By working together with all our customers, we can meet our shared energy goals and achieve net-zero carbon electricity by 2050. Please join us by using these no-cost tips for saving energy at home!

Save Energy While Cooking

Match the pot size to the burner size for energy-efficient cooking. If using a smaller pot, use a smaller burner. The Department of Energy also recommends using the oven light instead of opening the door to prevent heat loss when checking on a dish's progress.

Reduce Heating Costs, Increase Comfort

Open curtains or shades to let in the sun during the day to reduce heating costs. At night, close shades to improve comfort.

Wash With Cold Water

A washing machine spends an estimated 90% of its energy to heat water. Consider using cold water instead. In addition, try to wash full loads, because the machine uses roughly the same amount of energy regardless of the load size.

Unplug Electronics

Unplug your phone chargers, printers, computers, and other electronics when you are not using them. These devices can still use energy when not in use and can account for 5 to 10% of your total energy use. Consider using a power strip or smart power strip that further reduces standby energy use without even unplugging.

Set Furnace Fan to Automatic

Set your furnace fan to "auto" instead of "on." This is one of the biggest steps you can take to be energy efficient at home.

Get more energy-saving tips and information on our energy future at mge2050.com.

Submit your work to Kids Corner!

Kids and Teens: Want to submit your original artwork, joke, word puzzle, or coloring page to *Hi, Neighbor?*

Send an image via email to hineighboreastmorland@gmail.com.

Beach Jokes for Summer

1. Why don't oysters share their pearls?
2. How can you tell if the ocean is friendly?
3. Which day is the best for a trip to the beach?
4. What do fish use to buy their groceries?

ANSWERS: 1. Because they're shellfish. 2. It waves. 3. Sunday. 4. Sand dollars.

Diane's Draperies
The Window Covering Store

GRABER.

Creating beautiful spaces with detail to function and style since 1979.

*Soft Window Treatments
*Hard Window Treatments
*Pillows/Cushions
*Repairs

608-338-4269
diancesdraperies1979@gmail.com
www.diancesdraperies.com

Offering FREE installation on Graber products through the month of March!

4002 MONONA DR

HOEYRX.COM

608.221.4639



HOEY APOTHECARY

We are all about finding, creating, and executing solutions to best improve an individual's health.

CUSTOM COMPOUNDING

ESSENTIAL OILS

HOMEOPATHIC REMEDIES

VETERINARY COMPOUNDING

HERBAL SUPPLEMENTS

NUTRITIONAL SUPPLEMENTS

BRIDGING THE GAP BETWEEN NATURE & MEDICINE

\$5

OFF A PURCHASE OF \$25 OR MORE

OFFER EXCLUDES PRESCRIPTIONS

Lake Edge Neighborhood Association (LENA)

LENA OFFICERS

PRESIDENT: *Bentley Wolfe*
VICE PRESIDENT: *Alex Jaeger*
MEMBERSHIP: *Kathleen Connors*
SECRETARY: *Kat Prince*
TREASURER: *Sarah Wilkin*
SOCIAL OUTREACH: *Kate Schultz*
WEB LEAD: *Nick Heindl*

Contact the Lake Edge
Neighborhood Association at:
LakeEdgeNA@gmail.com

Learn more or join by
visiting our website:
lenamadison.org

Meetings are the 3rd Monday of each month at 6:30
p.m. via Zoom or in person. See
facebook.com/groups/543460612477296 for info.

Eastmorland Community Association (ECA)

ECA OFFICERS

PRESIDENT: *Rebecca LeBeau*
(info@eastmorland.org)
VICE PRESIDENT: *Micah Kloppenburg*
(micahklop@gmail.com)
SECRETARY: *Brian Juchems*
TREASURER & NEWSLETTER: *Dan Zimmerman*
(zimmerman_dan@hotmail.com)

DIRECTORS

*Betsy Elsmo, Kevin O'Malley,
Joel Sacramento, Kris Whitman*

MEMBERSHIP & FUNDRAISING: *Dan Zimmerman,*
608-241-1158, zimmerman_dan@hotmail.com

ECA WEBSITE: *Dan Glassman,*
dan.glassman@gmail.com, communications@eastmorland.org

WEB LIAISON: *Jennifer Moore,* jmoore3501@gmail.com

EASTSIDE PLANNING COUNCIL LIAISON

Matt Covert, mjcovert@gmail.com

STANDING COMMITTEES

SUNSHINE (*Call for cards to go out from ECA*):

Rose Sage, 608-575-4482

GARDENS: eastmorlandgardens@gmail.com



TREEHEALTHMGMT.COM

608.223.9120

Join us at ECA Meetings

ECA meetings begin at 7 p.m. on the second Tuesday
of each month at Pinney Library. Please email
Rebecca LeBeau (info@eastmorland.org) if you have
an agenda item, question, or other interest.

We hope to see you there!



3862 Johns Street, Madison, WI 53714
OasenPlumbingMadison.com
608-222-3656



Mennenga Tax & Financial Service

814 Atlas Avenue
Madison, WI 53714
(608)241-5678



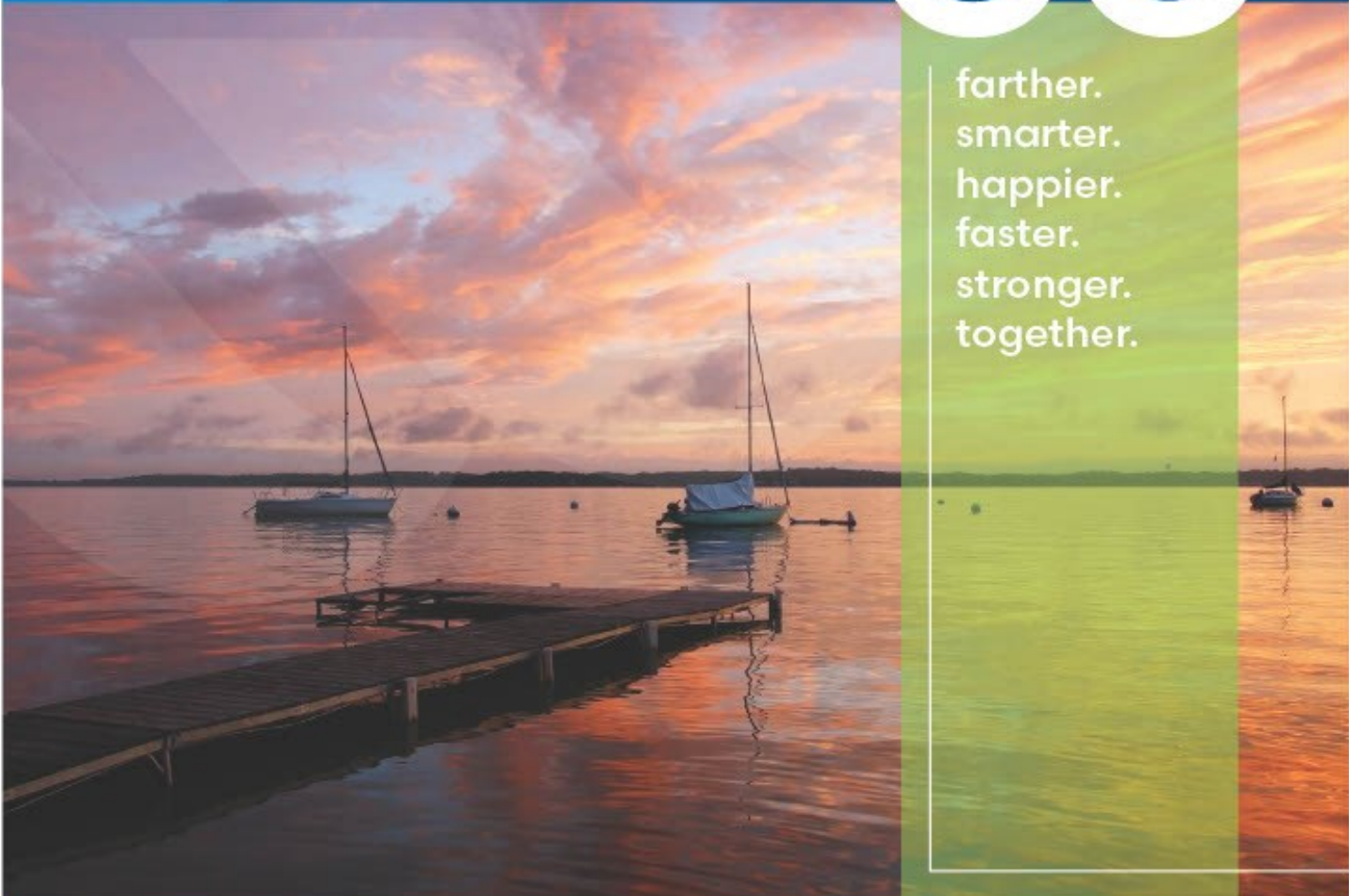
Lake Ridge
Bank™

Go Far. Go Together.

LIFE IS BETTER
AT THE LAKE.

GO

farther.
smarter.
happier.
faster.
stronger.
together.



6430 Bridge Road, Monona, WI 53713 • (608) 223-3000 • www.lakeridge.bank • Member FDIC



608-395-2300

300 Cottage Grove Road Madison, WI 53716

Daily Food and Drink Specials

Serving Tasty Sandwiches
and BUCK'S Pizza made to order at your table.
All BUCK'S coupons accepted.

All New Beer Lines with 16 Local and
Craft Beers to enjoy Icy Cold

Happy Hour: Mon. - Thurs. 3:30 - 7:30 p.m., Fri. till 6 p.m.
Live Music Fridays at 6:30 p.m.
Hours Monday - Friday: Open 11:30 a.m. till close
Saturday & Sunday: 11:00 a.m. till close

WOODMAN'S MARKETS

EMPLOYEE OWNED



**MADISON'S
LOW PRICE
LEADER!**

No Membership
Required!

**East: Milwaukee St.
West: Gammon Rd.**



WE HAVE MOVED!

1000 FEET DOWN THE ROAD

**CHECK OUT OUR NEW SPACE
MORE ROOM AND SEATING
MINI ARCADE - PATIO**

**YOUR NEIGHBORHOOD BAR!
OVER 100 DRINKS AND BEERS
FROM AROUND THE WORLD**

217 COTTAGE GROVE ROAD / 819-8501

WE ARE HERE TO MAKE YOUR BIKE RIDE AWESOME

-through education,
advice and proper
service support.

Large selection of bikes/Ebikes,
accessories, parts and clothing in stock.
All types of bicycles serviced.

TUESDAY NIGHT GROUP RIDES 6:20PM.



4118 Monona Dr.
608-286-1176
slowrollcycles.com

Cheers to a Neighborhood Bike Shop!

By Linda Linssen

Slow Roll Cycles opened its doors in 2019 in the Lake Edge Shopping Center on Monona Drive. Owners Stacy and Dan Dacko offer a wide selection of bikes and all things bike-related: tires, helmets, shoes, apparel, accessories, trailers/strollers, car racks - the works! They carry Giant, Liv, Kona, Transition, Momentum, Canfield, and Pivot Cycles in road, mountain, commuter, comfort, fitness, hybrid, electric, and children's styles. In addition to sales, Slow Roll's mechanics service all types of bikes and suspensions. No appointment is necessary for a quick eval and estimate, and service fees are posted right on their website.

Got maintenance/repair skills? Slow Roll carries the stuff you need to get the job done. Want info on where to ride? Hit the Local tab on Slow Roll's website for links to area bike trails, routes, and groups. Want to meet new friends? Join a Tuesday night ride. The route varies, and so does the distance - typically 20 to 40 miles. According to Dan, "You don't need to be fast. You just need to keep moving." To make sure no one loses the pack, one cyclist sweeps. All rides begin at Slow Roll Cycles. They also end there, unless you choose otherwise. Dan says to BYO bevvie and snack (and perhaps a little cash) for mid-ride socializing. He also encourages riders to "bring a sense of adventure."

For ride details, check Slow Roll's Facebook page (facebook.com/slowrollcycles/) on Tuesday afternoons,



Slow Roll Cycles owners Stacy and Dan Dacko

call 608-286-1176, or just stop by the shop. The good folks at Slow Roll will hook you up with a good time! You can find more info at slowrollcycles.com.

Bring your lifestyle to Oak Park®
Place where neighbors become like
family! We believe in helping you
write the best next chapter as you
make new memories in a community
designed with you in mind.

Independence When you Want It,
Assistance When you Need It.™

Madison East
608-663-8600

Madison West
608-640-4100



oakparkplace.com

Call to Learn More!



Coloring Page

Garden Critters

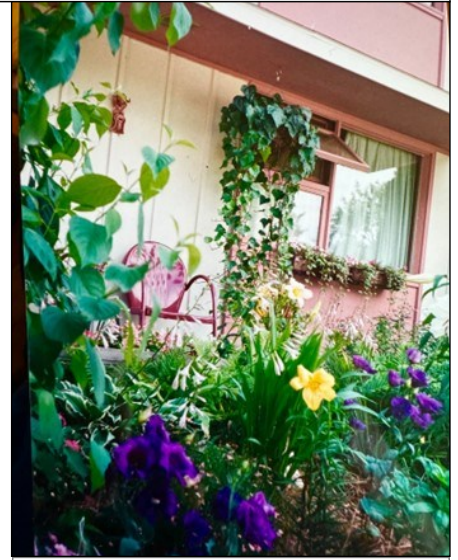


Source: Crayola.com

My Neighbor's Garden: Dee Long

(Continued from page 4) ing, with intuitive contrasts between shapes, heights, textures, and colors. In 2020, her garden was featured in the Olbrich Gardens home garden tour. "That was surprising!" she says. "My garden is just a little strip. I don't have a lot of room." One morning during the tour she was weeding when two ladies came by. "We talked flowers. They told me how much they liked my garden. It's nice when you realize people really do look at your garden and enjoy it."

While Dee credits gardening with keeping her active into her 80s, she says it's really about enjoyment - and surprise. "Surprise that I can do it!" she laughs. Sometimes Dee looks at her garden and thinks, "Oh my god, I did this?? This is wonderful! And if it smells good, so much the better!"



Dee's front porch

If you would like to be interviewed for My Neighbor's Garden, email Jennifer at JenniferPeterson5@gmail.com.



ETHICAL
TRADE CO

GOODS FOR A
BETTER WORLD

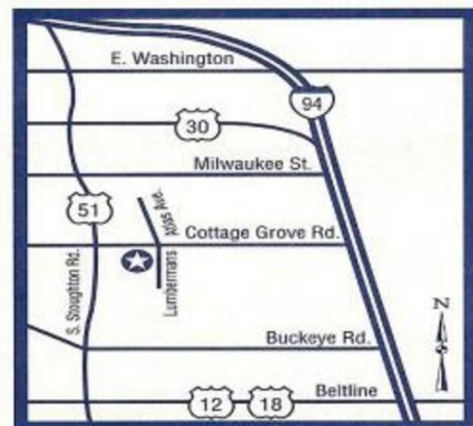
WEDNESDAY TO SATURDAY
11AM TO 5PM

3565 TULANE AVE, MADISON WI 53714

WWW.ETHICALTRADECO.COM



15% OFF
WITH THIS AD
CODE: ECA2024



Culver's of Cottage Grove
4401 Cottage Grove Road
Madison, WI 53716
(608) 268-0211

Guns to Garden Tools - Safe Surrender Community Event

By Staci Maresse-Wheeler - Eastmorland Community Center Director

Gun violence affects all communities in our country and is an escalating issue in our times. The rate of gun deaths in Wisconsin increased 28% from 2009 to 2018, compared to an 18% increase over that same time period nationwide. Often, people have an unwanted gun in their home but do not have a way to safely dispose of it.

Some owners do not want to sell their gun because they are afraid the gun may be used to harm others. Other owners are concerned that a child or family member may try to harm themselves if the gun is left in their home.

Guns to Garden Tools – a program started by Raw Tools, an organization that offers opportunities to help communities move away from violence – provides a safe way for folks to get unwanted firearms out of their homes. Gift cards are given to those surrendering guns, in exchange for the weapon. Surrendered guns are then converted into garden tools, by volunteers at the event, and offered to local gardening groups. This act of transforming weapons into instruments for growth also offers the community a way to learn together and support those impacted by gun violence.

A specific process to ensure safety in handling any guns is followed. People surrendering weapons drive through a specific area with guns in the trunks of their cars. The driver remains in their vehicle while a volunteer, trained to handle guns and check for any ammunition, removes the gun from the trunk of the car. **Guns need to be unloaded prior to bringing them for surrender. Ammunition will not be accepted or disposed of at the event.**

Jeff Wild, the local coordinator of Guns to Garden Tools, along with skilled volunteers will use chop saws and a forge to dismantle and transform surrendered guns onsite. Volunteers from local Maker's Spaces will be invited to



learn how to dismantle and reshape the firearms with Jeff instructing. This event will also focus on neighborhood education about the gardens that are a part of our neighborhood with tours and information about local gardening sites and groups.

You can learn more about Raw Tools and Guns to Garden Tools at rawtools.org/swords-to-plowshares/.

This event is being funded in part through a grant from the Willy Street Co-op Community Reinvestment Fund.

Guns to Garden Tools

September 28

9 a.m. to noon

Eastmorland Community Center, 3565 Tulane Ave.

10% off
Your next purchase with this coupon



Harley's Liquor and Bait
3838 Atwood Avenue
(608) 222-7941

www.harleysliquorandbait.com

Blair Lawn & Landscape Inc.

Creative Landscapes since 1984

Contact Blair today for:

- Landscape installation projects
- Design ideas • Consultations
- Low voltage Lighting
- Seasonal maintenance



BLAIR
LAWN & LANDSCAPE, INC.
Creative Landscapes Since 1984



www.blairlandscape.com • 608-255-1920

710 Cottage Grove Rd. #D • Madison, WI 53716



Alder District 15

Dina Nina
Martinez-
Rutherford

Madison Common
Council
608-709-9244
[District15](#)
@cityofmadison.com

Greetings everyone!

I'm a little over a year into my term, and this last year has been one of the most challenging and rewarding experiences of my life. I'm still so very grateful for the opportunity to serve you and the city I love. I continue to be encouraged by the passion of our city staff who work so hard for all of us every day. I continue to be inspired by the way that our neighborhood advocates not only for ourselves, but for those who are under-resourced and underrepresented.

Warmer weather is upon us and due to the unusually warm winter we had, the ticks are out early. I want to encourage you to check your loved ones and fluff ones every time you come back home.

I'm writing this in Miami from the NACTO (National Association of City Transportation Officials) Building Cities Conference. During the past several days, I've had thoughtful conversations about the way we create equity and build our cities' transportation systems. We often think about our transportation systems in terms of how they impact our own commute, and yet improving these systems involves thinking about so much more. It's about creating access for those who have no other way to get to their jobs, daycares, and schools. It's about providing friendlier paths for micromobility users. It's about making cities more walkable and safer for those who walk and play in our neighborhoods.

Thanks to ARPA and the Bipartisan Infrastructure Bill, we have been able to make a vital investment in Madison's future. As we get ready for our BRT to go online, I find myself thinking about how we will be able to serve so many more Madisonians. Our new fleet of accordion, electric buses will be online soon, getting more people than ever where they need to go. We keep adding bike and pedestrian infrastructure around the city to provide options for those who rely on bikes and mobility devices and those who walk. This will make Madison more accessible for all ages and abilities.

Please obey the speed limits in our neighborhoods. I know we've all noticed how much more intense driving through our city has gotten. Please keep yourselves safe by paying closer attention to how you're driving. If you find yourself getting angry while at the wheel, please take a deep breath. People drive badly ... we all drive badly at points. Our anger at other drivers isn't worth the potential of harming a pedestrian, biker, or possibly someone you love.

Lastly, thank you to everyone who has been able to attend our Budget Engagement Events around the city. We have some incredibly difficult decisions ahead. I always try to think about the most vulnerable in our city as I'm making decisions. Those who are on fixed incomes, the working poor, and all those who are finding it difficult to make ends meet. Thank you for all the input you have given and will continue to give as we move forward.

We have challenges, and we will continue to plug through them as thoughtfully and compassionately as possible. Thank you for all you do for our city.



5113 Monona Drive
Monona, WI 53716
Phone: (608) 237-6673
Visit: www.HSBELderLaw.com

Areas of Law Practice

Estate Planning
Elder Law
Probate
Guardianship
Special Needs (Disability)
WisPACT Trusts
Real Estate
Medicaid/Medicare
Family Law
VA Accredited

Attorneys:

Brenda R. Haskins
Julie A. Short
Anne M. Main
Anna M. Dontje
Amy R. Devine

50 + years combined experience

Reset Massage Therapy

Heather A. Simmons, LMT

Therapeutic and Relaxation Massage

1915 Winnebago Street



608-698-6608 heather-simmons-lmt.abmp.com featheras10@gmail.com
License #4092-146



**State Representative
District 48**

Samba Baldeh

Wisconsin State Assembly

608-266-0960

[Rep.Baldeh](#)

@legis.wisconsin.gov

Greetings Eastsiders!

I want to take this opportunity to commend you for the community you’ve built, as illustrated in this publication, and for the ways Eastmorland residents contribute to the greater area and city. Our times are challenging ones, but we all share responsibility for doing what we can for the common good. I take that responsibility very seriously, and I hope the new legislative maps will mean a more balanced and effective state government. I also have hope that this more balanced legislature will both listen and lead with solutions to the many challenges we face.

We can and should be problem solvers, implementing solutions and initiatives a majority of you and other Wisconsinites have been advocating for.

- We can and must solidly affirm reproductive rights for all women. There is no justification for doing anything else. The people of our 48th District, regardless of gender, are extremely clear about this, as are a majority of people in this state.



**State Senator
District 16**

Melissa Agard

Wisconsin State Senate

608-266-9170

Sen.Agard@legis.wisconsin.gov

New Funding Improves Survivors’ Lives in Wisconsin

Victims of domestic abuse and sexual assault deserve every avenue available to become survivors. Together, we must continue to make Wisconsin a safer place.

Alongside a bipartisan coalition of legislators, I introduced a bill (SB 877) to fund victim services and domestic violence services in Wisconsin at the level previously proposed by Governor Evers. The legislation also provides grants to Child Advocacy Centers (CACs) that provide multi-disciplinary approaches to investigating child abuse while also working with law enforcement to interview child victims in a friendly manner and environment.

Most service providers historically obtained their

- We can and must adopt Medicaid reimbursement. The new legislature should do this immediately in January. If the Republicans of the Joint Finance Committee had not stripped this provision from Governor Evers’s budget, we could have covered 89,700 more state residents with preventive care and adequate treatment for illness and injury. This is one step toward health care access for all. We will still have to tackle related issues such as exorbitant prescription drug costs.
- We can and must invest in quality, affordable child care and address the related issue of child care provider wages. The work of caring for the youngest members of our community must be valued with compensation that allows providers to thrive. We can invest in our young people from infancy forward with full funding for education without increasing the tax burden on people who may already be struggling financially.
- We can and must do better to protect our environment. The new legislature should immediately bring back the bill I co-authored earlier this year, laying out a comprehensive approach to PFAS, including a ban.

It has been an honor to represent you, and I will miss working with you, since come January I will no longer represent Eastmorland. I greatly appreciate this district’s and neighborhood’s civic engagement, including all the ways you have held me accountable. I can’t emphasize enough that it is essential for people to hold elected officials accountable.

funding through the federal Victims of Crime Act Fund (VOCA). However, the federal Department of Justice announced that Wisconsin could expect a nearly 40% drop in funding in 2024 due to a lack of Congressional action (https://content.govdelivery.com/attachments/WIDOJ/2023/09/27/file_attachments/2628459/VOCA%20Funding%20Update%209.2023_Slide%20Deck.pdf). Without the state funding provided in SB 877, victims of terrible crimes would be faced with a dire lack of services.

Thankfully, this lifesaving bill was signed into law by Governor Evers, which is a huge step in the right direction for Wisconsinites to receive life saving services and feel seen, heard, and believed.

While no piece of legislation can ever erase the trauma of sexual violence, no one should experience barriers to justice and support during the most difficult times of their lives. It is the role of the government to step up and provide for a safer, more compassionate path so that people can heal.

Conversations about domestic and sexual violence are difficult, but we must take meaningful steps to protect Wisconsin’s victims while preventing future violence. With comprehensive, bipartisan legislation like the bill passed this session, we can create a safer Wisconsin, where assailants are held accountable, and victims can become survivors.

JOIN ECA/LENA TODAY!

Annual ECA/LENA membership dues are voluntary and are \$10 for a basic membership and \$25 for a supporting membership. Dues collected are used for general operations expenses and for special neighborhood events, such as the spring park clean-up and fall leaf-raking parties and potlucks. While everyone living in the neighborhood is considered to be a member of ECA, only paid members have the additional benefits of participating in the annual ECA/LENA garage sale and Santa visits. ECA relies on your support.

If you live in the **Eastmorland neighborhood**, you may pay your dues/make a general contribution by completing and mailing this form with your check to ECA, PO Box 14584, Madison, WI 53708 or via PayPal by going to eastmorland.org and clicking on the "Donate" tab.

If you live in the **Lake Edge neighborhood**, you may pay your dues/make a general contribution by completing and mailing this form with your check to LENA, PO Box 14102, Madison, WI 53708 or by going online to lenamadison.org/membership/ (note: there is a \$1.00 processing fee).

Note: ECA and LENA are not IRS 501(c)(3) approved organizations, so your dues and contributions are not tax deductible.

Thanks for being an active member of the neighborhood!

Name:

Address:

Phone:

Email Address:

Contribution for Dues/General Purposes:

\$ _____

Would you like to volunteer to help? If so, email the ECA president at info@eastmorland.org or the LENA president at LakeEdgeNA@gmail.com.

Monona Grove Nursery School
Programs for ages 0-5 Since 1958!
Morning & Afternoon Classes
MMSD 4K • Preschool • Toddler Time

Enroll Today for 2024-2025!
Visit MGNS.org/Enroll
or Call (608) 222-4633



MGNS... Since 1958!

Visit us at MGNS.org or
Call (608) 222-4633
to Arrange a Tour Today!

Monona Grove Nursery School is a
State Licensed & Accredited Parent Coop



a perfect place to learn through play



Cottage Cafe
915 Atlas Avenue
221-4815

Open 6:00AM – 2:00PM • 7 days a week
Home Cooked Daily Specials (Mon–Fri) • Dine-in or Carry-out
Catering • We Serve Breakfast All Day – Every Day

New Park Going In Next to Garver Feed Mill

The city of Madison is officially planning to build a park on the open, formerly industrial parcel of land adjacent to Garver Feed Mill. On May 8, the Board of Park Commissioners approved the Parks Division's plan for Olbrich Park - North, as the new park is currently called.

The park will consist of:

- A managed meadow area with multiple walking trails.
- A conjoined set of picnic, play, and open field areas.
- A beginner bike skills loop.
- A ~60 stall parking lot (that will also include bike parking).
- A storage area for Olbrich Botanical Gardens.

If the Parks Division can find a community organization with which to partner, they also plan to set aside some

amount of the park for a community garden. (The complete plan for Olbrich Park - North is available on the Parks Division's website: cityofmadison.com/parks/projects/olbrich-park-north-parcel-park-development-plan.)

The city's plan states that the natural wooded and wetland areas that surround the soon-to-be-park will not be developed. If everything goes according to plan, the city will bid out phase one of the park's construction before the end of the year and construction will begin in spring 2025.

LENA Board Members Pitch In for Earth Day 2024 at Lake Edge Park



We're always looking for more story ideas and volunteers for *Hi, Neighbor!*
See page 2 for details.



• Innovative Thought • Exceptional Design • Detail-Driven Production

Where
you go
with
your
brand.